



SERVICE PARTS LIST

BULLETIN NO.
PN0004809

SPECIFY CATALOG NO. AND SERIAL NO. WHEN ORDERING PARTS		REVISED BULLETIN	DATE
M18™ Top Off Charger and Power Supply			Mar. 2025
CATALOG NO.	2847-20	SERIAL NUMBER	R47A
			WIRING INSTRUCTION

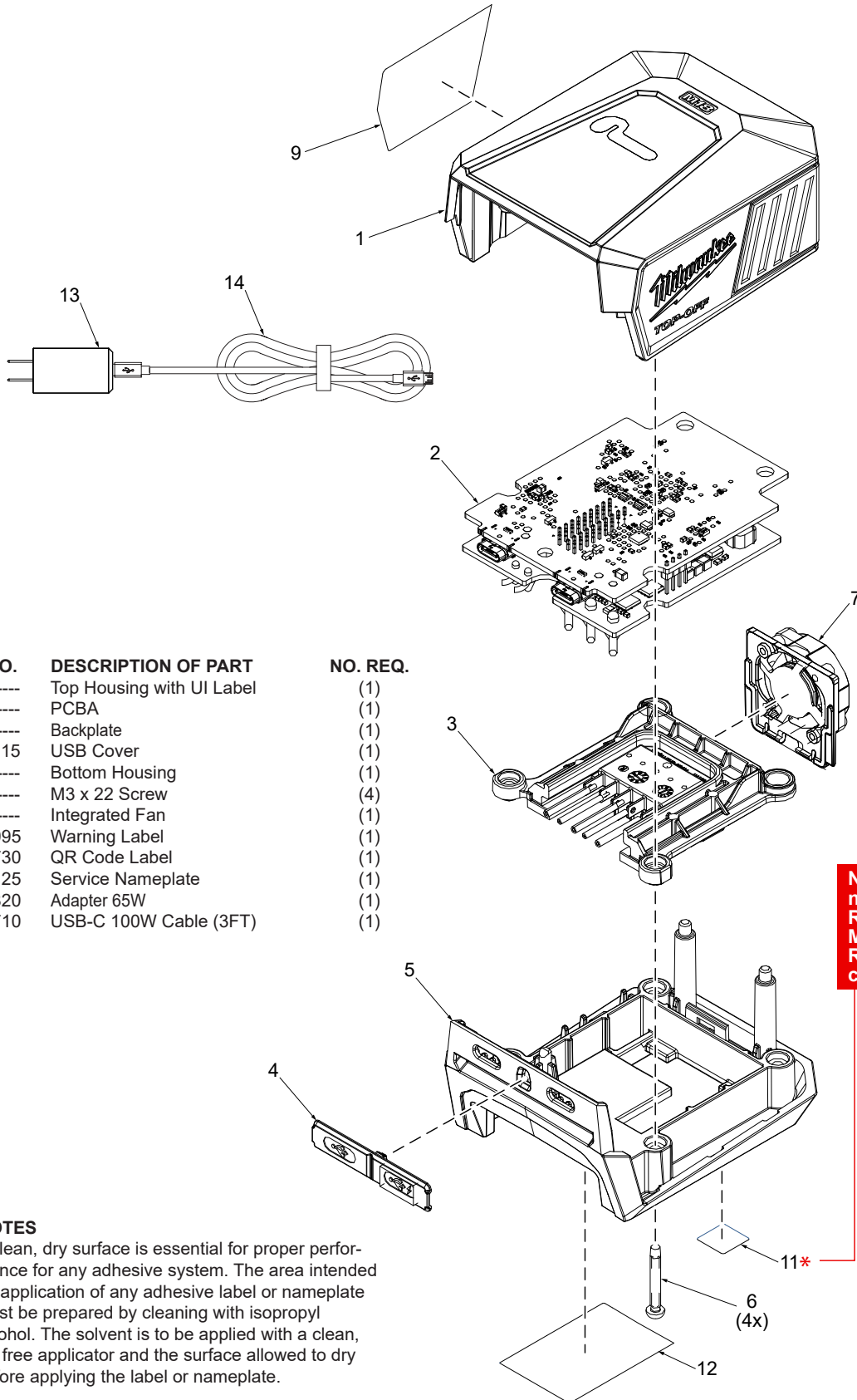


FIG.	PART NO.	DESCRIPTION OF PART	NO. REQ.
1	-----	Top Housing with UI Label	(1)
2	-----	PCBA	(1)
3	-----	Backplate	(1)
4	42-92-7115	USB Cover	(1)
5	-----	Bottom Housing	(1)
6	-----	M3 x 22 Screw	(4)
7	-----	Integrated Fan	(1)
9	10-22-1995	Warning Label	(1)
11	10-15-9730	QR Code Label	(1)
12	12-20-9125	Service Nameplate	(1)
13	42-04-0820	Adapter 65W	(1)
14	42-44-0710	USB-C 100W Cable (3FT)	(1)

Note: QR codes are not user-replaceable. Return your tool to a Milwaukee Authorized Repair Center for QR code replacement.

FIG. NOTES

9,11,12 A clean, dry surface is essential for proper performance for any adhesive system. The area intended for application of any adhesive label or nameplate must be prepared by cleaning with isopropyl alcohol. The solvent is to be applied with a clean, lint free applicator and the surface allowed to dry before applying the label or nameplate.